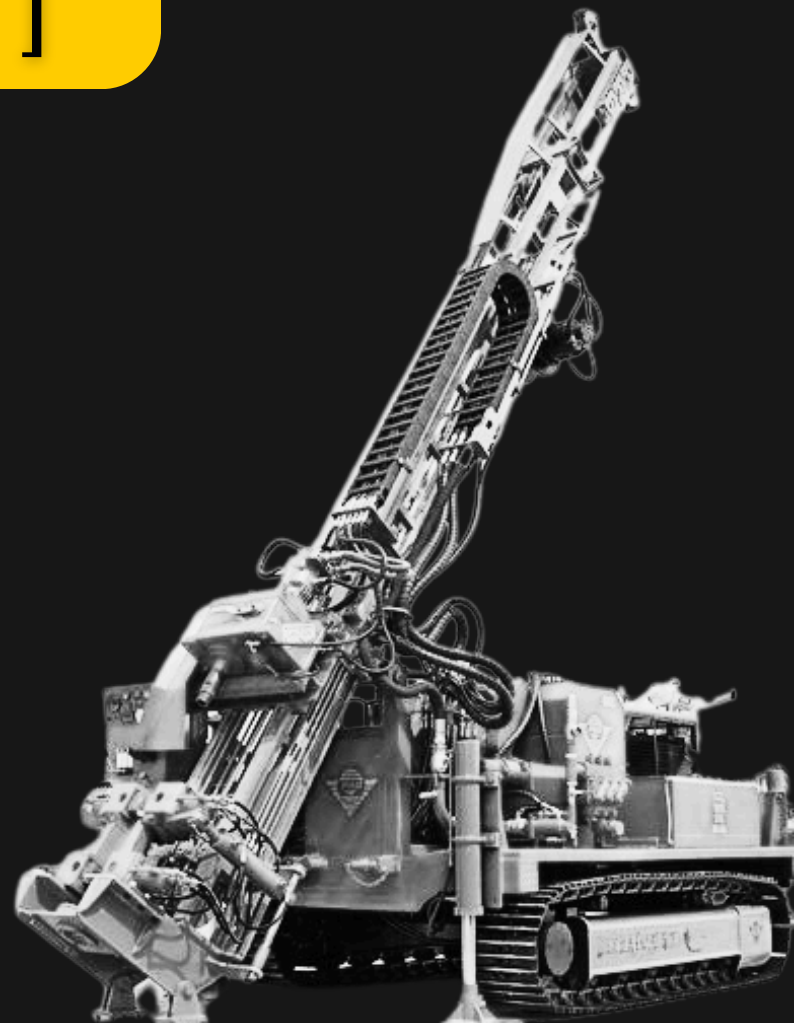




**PRODUCT CATALOG
[CORE DRILLING]**

APEX



WWW.APEXSONDAJ.COM

WELCOME TO

APEX

Apex is a leading provider of premium core drilling equipment and percussive tooling, catering to the mining industry. With 8 years of expertise in the sales of global brands, we possess unmatched knowledge in identifying the best tooling for specific needs. This deep understanding of global tooling standards enables us to deliver high-quality solutions that enhance efficiency and performance. At Apex, we pride ourselves on being a trusted partner, ensuring our clients' projects are equipped with superior products under one roof.

At Apex, our mission is to be the ultimate one-stop shop for premium drilling equipment and tooling in the mining industry. Leveraging 8 years of experience in sales of global brands, we specialize in evaluating and comparing tooling options to deliver the best solutions for our clients. Our commitment is to provide high-performance products that meet the toughest demands in mining operations.

Our vision is to solidify Apex as the premier supplier of drilling equipment and tooling for the mining industry. By combining unparalleled expertise in tooling evaluation with a focus on quality and innovation, we strive to set new standards in performance and reliability, empowering our clients to achieve success in every project.



TABLE OF Contents

Welcome Message	1
Table of Contents	2
Main Catagories	3
Auxiliary Tools	4
Core Barrel Kits	6
Head Assembly	7
Overshot	8
Other Tools	9
Drilling Additives	10
Diamond Tools	11
Rods & Casings	12

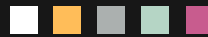




IN HOLE TOOLS

In-the-Hole (ITH) tools are an essential component of core drilling operations, ensuring efficiency, accuracy, and reliability in challenging mining and exploration environments. These tools operate within the borehole, providing vital support for drilling, sampling, and extracting core materials.

We provide a comprehensive range of IHT items, including head assemblies, core lifters, cases, and locking couplings, available in various types to suit different geological formation conditions. Additionally, we offer specialized solutions for underground operations.



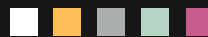
DIAMOND TOOLS

Our diamond tools are specially chosen and engineered for precision, durability, and exceptional performance in the toughest drilling conditions. From diamond bits and reaming shells to casing shoes and surface bits, we offer a wide range of products designed to optimize your drilling operations. Each tool is crafted with high-quality diamonds and cutting-edge technology, ensuring superior penetration rates and longer service life.



RODS & CASING

Our core drill rods and casings strike the perfect balance between premium quality and cost-effectiveness. Manufactured with precision from high-grade materials and exceptional thread heating, they ensure durability and optimal performance in demanding drilling conditions. Designed for exceptional thread integrity and seamless connections, our rods and casings reduce costs and enhance efficiency. With competitive pricing and superior quality, we offer the best value for your investment, making them the preferred choice for mining and geotechnical projects worldwide.





CORE BOXES

Our plastic core boxes are designed to provide secure and reliable core sample storage for mining and exploration projects. Crafted from durable, high-quality materials, they are built to withstand extreme conditions while ensuring the integrity of your core samples. With features like UV resistance, stackable design, and easy labeling options, our core boxes offer unmatched convenience and efficiency.



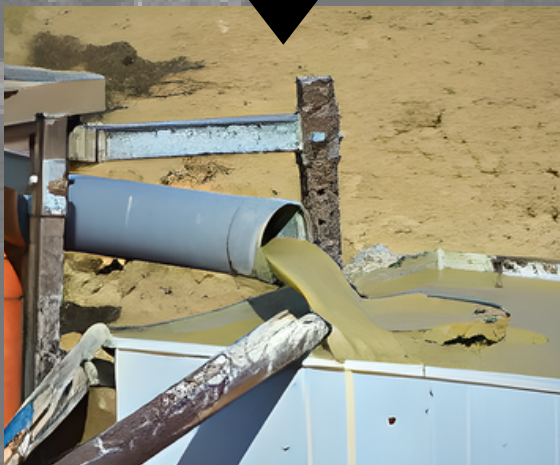
DRILL RIG SPARES

Designed for compatibility with leading equipment brands, our spare parts include everything from bearings and seals to pumps, couplings etc. Manufactured to the highest standards, they ensure durability and reliable performance in demanding conditions. With competitive pricing and fast availability, our core drill spares offer the perfect balance of quality and value, minimizing cost and maximizing efficiency on every project.



DRILLING ADDITIVES

We offer a comprehensive selection of drilling additives, including Bentonite, Polymer, PAC and Lost Circulation Materials, each carefully selected to meet the specific needs of your drilling conditions. Bentonite provides superior viscosity and hole stability, while our polymers offer excellent fluid control and lubrication. With our expertise in mud engineering and high-quality additives, we help optimize your drilling operations, reduce downtime, and improve cost-effectiveness.



ACCESSORIES

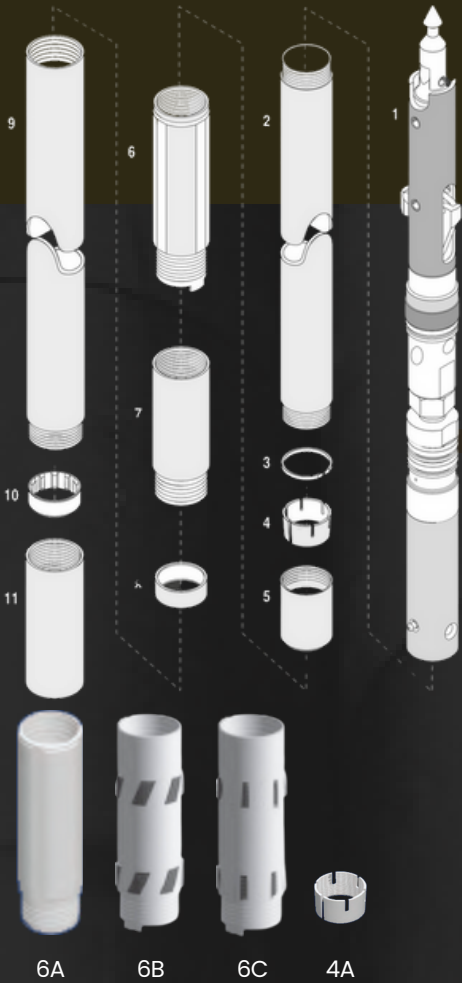
We offer a range of reliable drilling accessories, including pipe wrenches, inner tube wrenches, mixers and all stuff you may need for core drilling operation. Designed for durability, safety and performance, our products help enhance the efficiency and reliability of your drilling operations.



IN HOLE TOOLS

CORE BARREL KITS

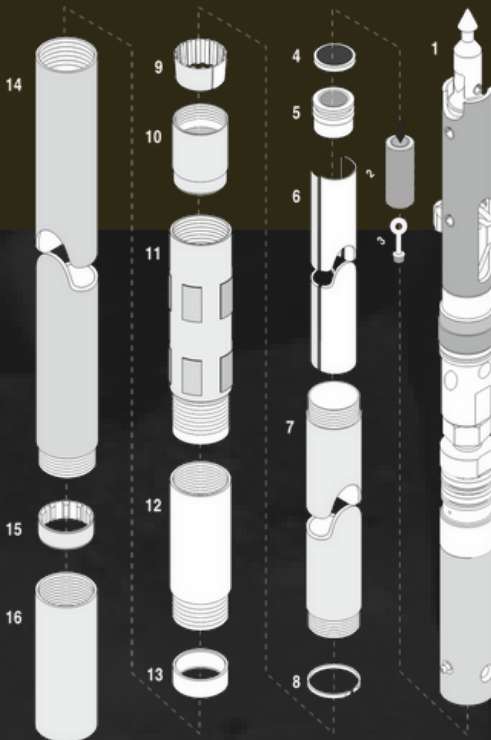
[P] / [H] / [N] / [B] CORE BARREL KIT



#	ITEM	QTY
1	HEAD ASSEMBLY	1
2	INNER TUBE 1.5M / 3.0M	1
3	STOP RING	1
4	CORE LIFTER FLUTED	1
5	CORE LIFTER CASE	1
6	LOCKING COUPLING FULL HOLE W/TANG	1
7	L/COUPLING ADAPTER	1
8	LANDING RING	1
9	OUTER TUBE 1.5M / 3.0M	1
10	INNER TUBE STABILIZER	1
11	CASE PROTECTOR	1

#	OPTIONAL ITEMS	QTY
4A	CORE LIFTER SLOTTED	1
4B	CORE LIFTER BASKET TYPE	1
6A	LOCKING COUPLING FULL HOLE W/OUT TANG	1
6B	LOCKING COUPLING DIAMOND PADS	1
6C	LOCKING COUPLING TUNGSTEN PINNED	1

[P3] / [H3] / [N3] CORE BARREL KIT

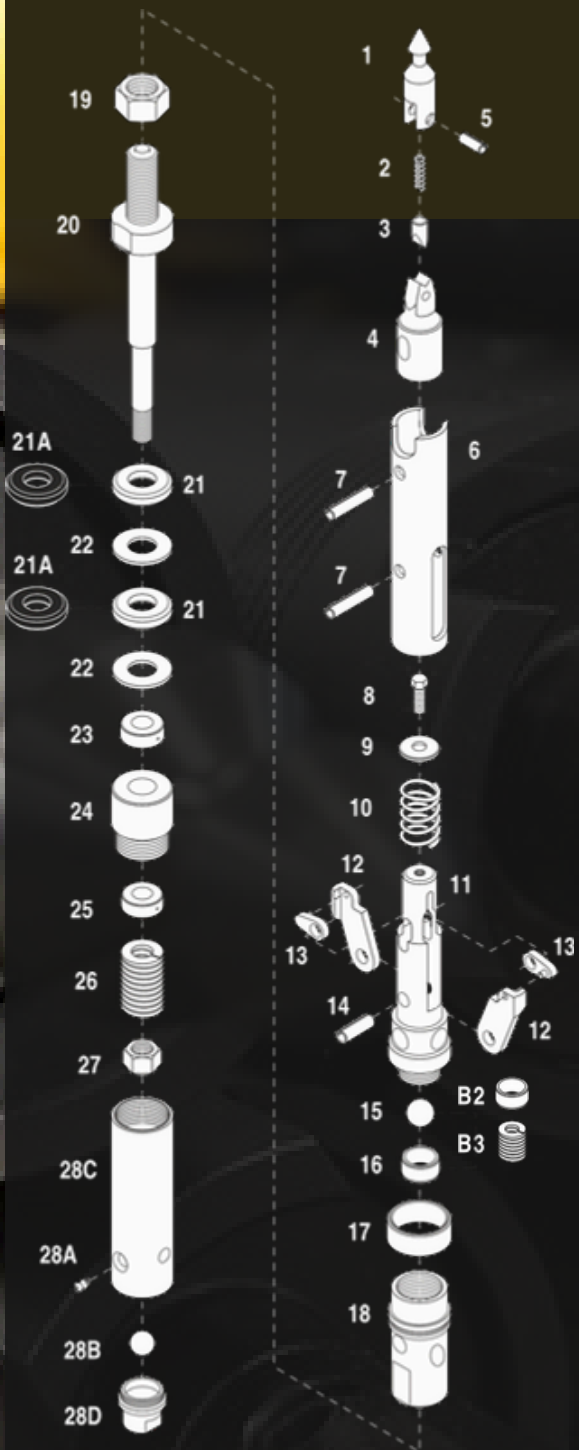


#	ITEM	QTY
1	HEAD ASSEMBLY	1
2	PUMP - OUT ADAPTER	1
3	PISTON PLUG	1
4	ORING	1
5	CORE EJECTION PISTON	1
6	SPLIT TUBE 1.5M / 3.0M	1
7	INNER TUBE 1.5M / 3.0M	1
8	STOP RING	1
9	CORE LIFTER	1
10	CORE LIFTER CASE	1
11	LOCKING COUPLING	1
12	L/COUPLING ADAPTER	1
13	LANDING RING	1
14	OUTER TUBE 1.5M / 3.0M	1
15	INNER TUBE STABILIZER	1
16	CASE PROTECTOR	1

IN HOLE TOOLS

HEAD ASSEMBLY

[P] / [H] / [N] / [B] HEAD ASSEMBLY ITEMS



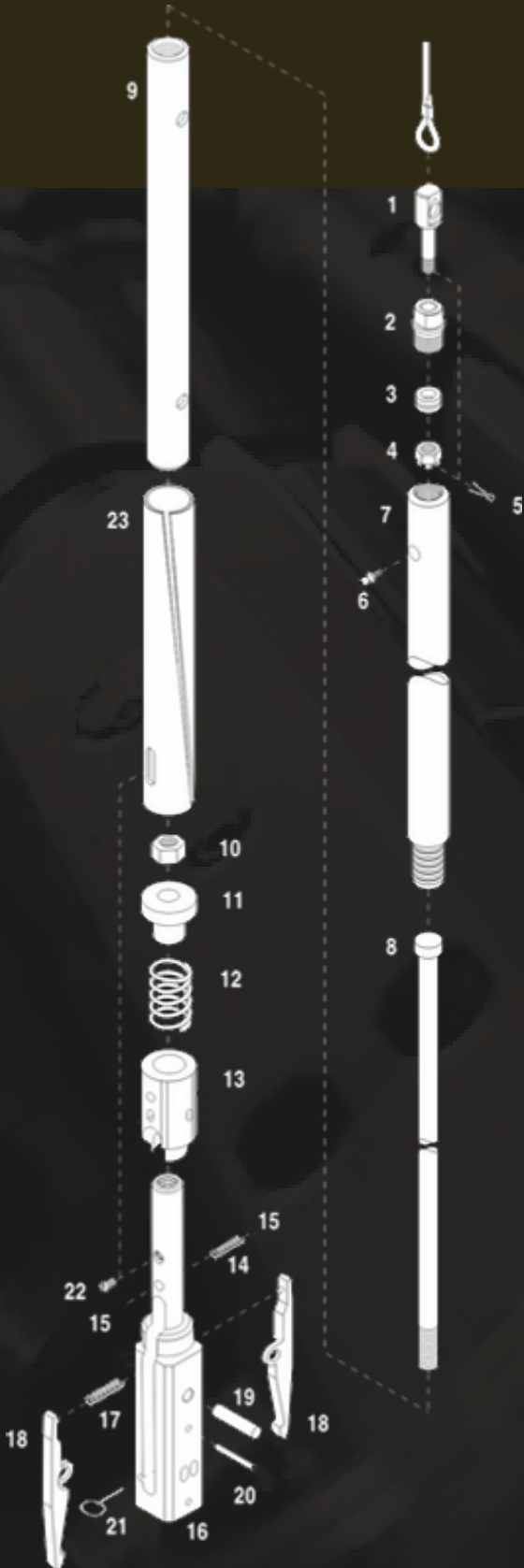
#	ITEM	QTY
1	SPEARHEAD POINT	1
2	COMPRESSION SPRING	1
3	DETENT PLUNGER	1
4	SPEARHEAD BASE	1
5	SPIROL PIN	1
6	LATCH RETRACTING CASE	1
7	SPRING PIN	2
8	NYLOC BOLT	1
9	WASHER	1
10	LATCH COMPRESSION SPRING	1
11	UPPER LATCH BODY	1
12	LATCH	2
13	LINK	2
14	SPRING PIN	1
15	STEEL BALL 22MM	1
16	LANDING INDICATOR BUSHING	1
17	LANDING SHOULDER	1
18	LOWER LATCH BODY	1
19	HEX NUT	1
20	SPINDLE	1
21	SHUT OFF VALVE, HARD	2
22	VALVE ADJUSTING WASHER	2
23	THRUST BEARING	1
24	SPINDLE BEARING	1
25	HANGER BEARING	1
26	COMPRESSION SPRING	1
27	STOVER LOCK NUT	1
28	INNER TUBE CAP ASSEMBLY	1

#	OPTIONAL ITEMS	QTY
16A	LANDING INDICATOR BUSHING, DEEP HOLE	1
21A	SHOT OFF VALVE, SOFT	1
#	DRY HOLE ITEMS	QTY
B2	FLUID RETENTION BUSHING	1
B3	FLUID RETENTION SPRING LIGHT / MEDIUM / HEAVY	1

IN HOLE TOOLS

OVERSHOT

[P] / [H] / [N] / [B] OVERSHOT



#	ITEM	QTY
1	EYE BOLT	1
2	CABLE SWIVEL COLLAR	1
3	THRUST BEARING	1
4	CASTLE NUT	1
5	COLLAR PIN	1
6	GREASE FITTING	1
7	CABLE SWIVEL BODY	1
8	JAR STAFF	1
9	JAR TUBE	1
10	HEX NUT	1
11	CAP	1
12	SPRING	1
13	SLEEVE	1
14	COMPRESSION SPRING	1
15	BALL	2
16	OVERSHOT HEAD	1
17	COMPRESSION SPRING	1
18	LIFTING DOG	2
19	PLAIN PIN	1
20	SPRING PIN	1
21	LOCKING PIN	1
22	SET SCREW	1
23	LOCKING SLEEVE	1

#	OPTIONAL ITEMS	QTY
24	PQ OVERSHOT STABILIZER	1

IN HOLE TOOLS

OTHER TOOLS

WATER SWIVELS



COMPACT PLUS WATER SWIVEL

HEAVY DUTY WATER SWIVEL

U/G COMPACT WATER SWIVEL

Water swivels are available in various configurations, designed to meet the specific requirements of the operation, whether for underground or surface drilling, as well as the intended drilling depth.

An adapter for water swivels must be ordered separately

HOIST PLUGS

STANDARD HOIST PLUG

HEAVY DUTY HOIST PLUG



Hoist plugs are available in two types: Standard Hoist Plugs and Heavy-Duty Hoist Plugs. The Standard Hoist Plug is recommended for shallow drilling depths, while the Heavy-Duty Hoist Plug is the ideal choice for deeper boreholes.

An adapter for the hoist plug must be ordered separately.

ADAPTERS / SUBS



ROD ADAPTERS

CASING ADAPTERS

WATER SWIVEL ADAPTERS

HOIST PLUG ADAPTERS

RECOVERY TAP ADAPTERS

CUTTER ADAPTERS

BLANK ADAPTERS

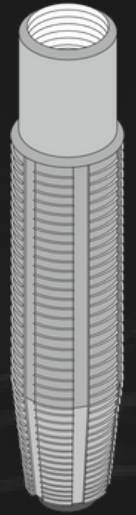
Adapters and subs are available in Male/Male and Male/Female types for rods, casings and other tooling.

RECOVERY TOOLS

RECOVERY TAPS

OVERSHOT FISHING TOOLS

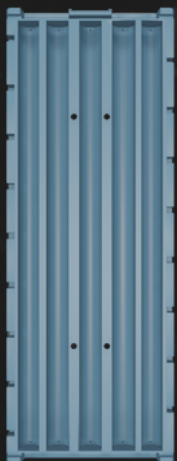
CUTTERS



Recovery taps are available in various types with male / female options.

Cutters are designed for rods and casings in a variety of sizes.

CORE BOXES



PLASTIC CORE BOXES
[B / N / H / P / S]

CORE BOX LIDS

CORE BOX SEPARATORS

CHIP BOXES

Crafted from high-quality, recycled plastic, these eco-friendly core boxes are available in sizes ranging from [B] to [P]. Each size is compatible with a single, specially designed lid for a secure fit

ACCESSORIES

RIDGID PIPE WRENCHES

CORE HAMMERS

WIRELINE / HOIST CABLE

135 TRIPLEX PUMP

MUD MIXER / TANK

PROTECTIVE SAFETY EQP

DRILL RIG SPARES



Our range of accessories includes essential tools and equipment to support your drilling operations.

MUD PRODUCTS

DRILLING ADDITIVES

BENTONITE & WEIGHTNING AGENTS



APEX-GEL DRILLING BENTONITE

APEX-GEL HDD BENTONITE

PELLET BENTONITE

BARITE

High-quality bentonite products are designed to enhance the performance of drilling operations. Used primarily for stabilizing boreholes and preventing the collapse of the walls, our bentonite products offer excellent viscosity, fluid loss control, and suspension properties.

VISCOSITY

A-VIS DRY PHPA POLYMER

A-VIS LIQUID PHPA POLYMER

PHPA (Partially Hydrolyzed Polyacrylamide) polymer is a high-performance product designed to enhance the efficiency of drilling operations. Used primarily as a viscosity modifier, PHPA polymer helps improve fluid loss control and hole stability in water-based mud systems. It effectively reduces friction and promotes better cuttings removal, making it ideal for both exploration and geotechnical drilling.



FILTRATION



AX-PAC [LV]

AX-PAC [R]

AX-PAC [HV]

CMC [LV]

CMC [HV]

Filtration additives, including PAC (Polyanionic Cellulose) and CMC (Carboxymethyl Cellulose), are essential for optimizing drilling fluid performance. These additives are designed to improve fluid loss control, enhance viscosity.

LOST CIRCULATION METATERIALS

AX-SEAL [F/M]

AX-PLUG

LCM products are specially formulated to address and prevent fluid loss during drilling operations. Designed to seal fractures, porous formations, and other high-loss zones, LCM products help restore wellbore pressure and maintain the stability of the borehole. Whether you're dealing with mild or severe circulation loss, ensure that operations proceed smoothly, minimizing downtime and improving overall efficiency.



LUBRICATION & GREASE



AX - PEN

AX - LUBE

AX - ROD GREASE

AX - THREAD GREASE

Lubrication products are designed to enhance the performance and longevity of drilling equipment. From reducing friction to preventing wear and tear, our high-quality lubricants ensure smooth operation of drill rods, bits, and other critical components.

OTHER ADDITIVES

SODA ASH

CAUSTIC SODA

AX - THINNER

PAX - FOAM

LIGNOSULFONATE

CALCIUM CARBONATE

These specialized products are essential for optimizing drilling operations across different drilling methods and formation conditions.



DIAMOND TOOLS

IMPREGNATED BITS

DIAMOND BIT SELECTION



BLUE BIT

Mohs Hardness : 1 - 4
Abressive , Broken
Formations



GREEN BIT

Mohs Hardness : 5 - 7
Abressive , Compotent
/ Broken Formations



ORANGE BIT

Mohs Hardness : 6 - 8
Abressive , Compotent
/ Broken Formations



RED BIT

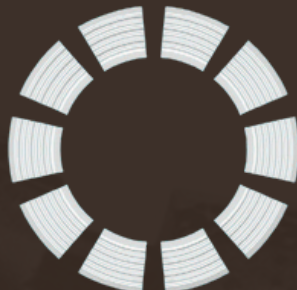
Mohs Hardness : 8 - 9
Non-Abressive
Compotent Formations

CROWN SELECTION



STANDART WW

General purpose design
for competent, broken,
abrasive and non-abrasive
formations



WIDE WW

Superior flushing capability.
Suitable for both broken and
component formations that
requiring increased fluid flow



TURBO WW

Reduced contact area allows
for increased penetration
rates. High performance
under low weight on the bit.



FACE DISCHARGE

Increases core recovery
for difficult conditions
where the core sample is
susceptible to washing.

DIAMOND TOOLS

OTHER TOOLING

REAMING SHELLS



REAMING SHELL R

REAMING SHELL DUAL PAD

ROD REAMING SHELL

Apex provides a range of premium reaming shells designed to maintain hole direction, ensure proper hole gauge, and reduce premature wear on drilling tools caused by vibration. Our heavy-duty reaming shells are available in diamond-impregnated and surface-set configurations, offered in all standard DCDMA sizes to meet diverse drilling needs.

CASING / ROD SHOES

DIAMOND CROWN C/S

DIAMOND CROWN ROD SHOE

CARBITE CASING SHOE



Apex offers high-performance casing shoes designed to ensure smooth casing advancement and prevent snagging on borehole irregularities. Available in B, N, H, and P sizes, we also provide economy options for N and H sizes, as well as oversize options in N, H, and P to suit a variety of drilling requirements.

PCD / PDC BITS



CORING PCD BITS

NON-CORING PCD BITS

Polycrystalline Diamond (PCD) Bits have a purpose designed cast matrix head with 13.3mm round PCD inserts fixed in a cutting pattern. Non-Core Bits are used for open hole drilling. PCD Drill Bits have proven extremely successful in soft to medium-hard consolidated formations. They are used widely in coalfield exploration and open hole drilling to the zone of interest before core drilling commences.

SURFACE BITS

PILOT SURFACE BITS

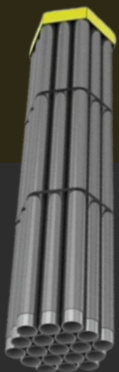
STEP SURFACE BITS



A range of surface set bits manufactured to the highest quality standards to give long service life and a maximum rate of penetration in soft to hard formations. The range includes a variety of diamond grades, stone sizes and face profiles enabling a cost-effective solution to be chosen for most conditions.

RODS & CASINGS

RODS



Apex offers high-quality drill rods engineered for durability, precision, and reliability in demanding drilling environments. Manufactured from premium-grade steel, our drill rods provide excellent strength and wear resistance, ensuring optimal performance and longevity. Designed with precision-threaded connections, they deliver secure and efficient torque transfer while minimizing the risk of thread damage. Available B, N, H and P sizes with 1.5m / 3.0m options. Apex drill rods are suitable for a wide range of applications, from exploration drilling to geotechnical investigations, making them the ideal choice for your drilling operations.

CASINGS



Apex offers premium casings specifically designed for core drilling applications. Built from high-quality materials, our casings provide essential support and stability to boreholes, ensuring smooth and efficient drilling operations. Available in various sizes and thread configurations, they are tailored to meet the unique demands of core drilling, delivering reliable performance even in challenging formations. Casings are engineered for durability and ease of use, making them the perfect choice for professional core drilling projects.



APEX

Contact



+ 90 533 777 01 87



sales@apexondaj.com



www.apexondaj.com



Ankara / Turkey

